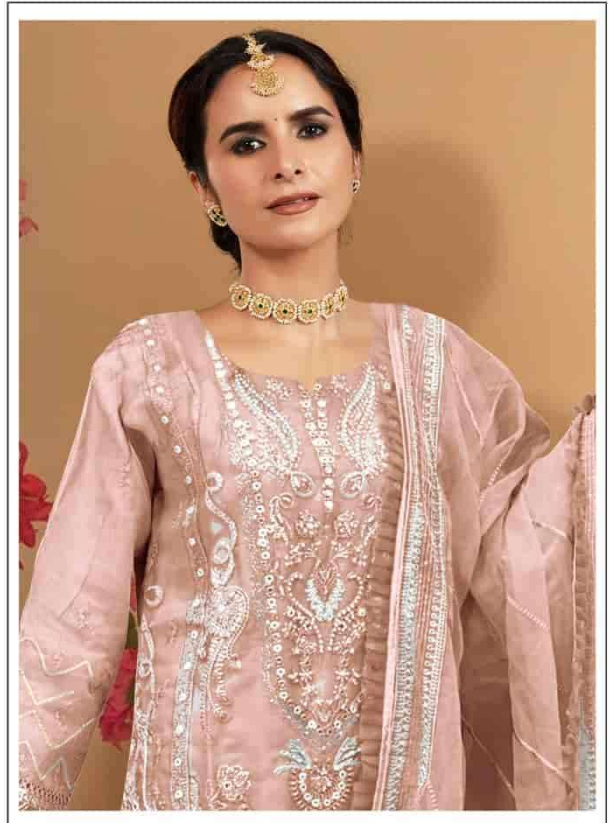


**Motifz**  
FASHION FORWARD

**D.no-295-D**



**TOP- ORGANZA WITH EMROIDERY**

**BOTTOM- SANTOON**

**DUPATTA- ORGANZA WITH EMROIDERY**



**TOP- ORGANZA WITH EMROIDERY**

**BOTTOM- SANTOON**

**DUPATTA- ORGANZA WITH EMROIDERY**



D.no-295-A



D.no-295-B



D.no-295-C

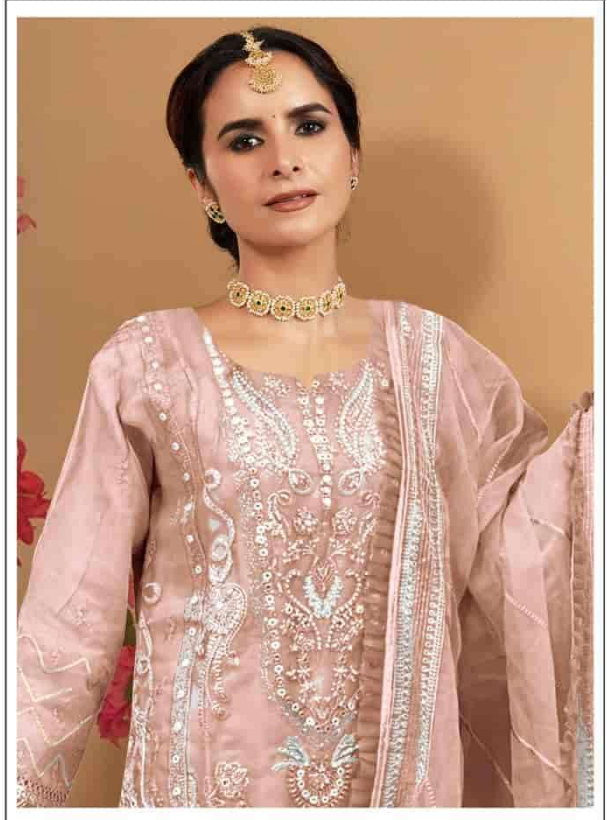


D.no-295-D



**Motifz**  
FASHION FORWARD

**D.no-295-D**



**TOP- ORGANZA WITH EMROIDERY**

**BOTTOM- SANTOON**

**DUPATTA- ORGANZA WITH EMROIDERY**



Motifz  
DESIGNER WEAR

Motifz  
DESIGNER WEAR

Motifz

D.no-295-C

TOP: SHAWLA WITH EMBROIDERY  
BOTTOM: SHATTOON  
SHOULDER: SHAWLA WITH EMBROIDERY



Notifz  
FASHION FORWARD

Notifz

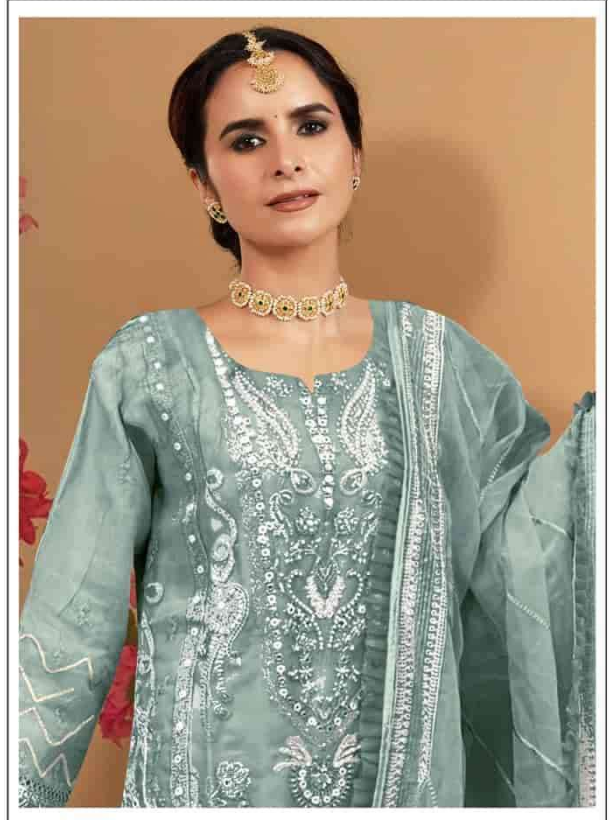
Notifz

D.no-295-A

TOP: ORGANELA WITH  
BOTTOM: BARTOCCO  
MATERIAL: ORGANZA

**Motifz**  
FASHION FORWARD

D.no-295-A



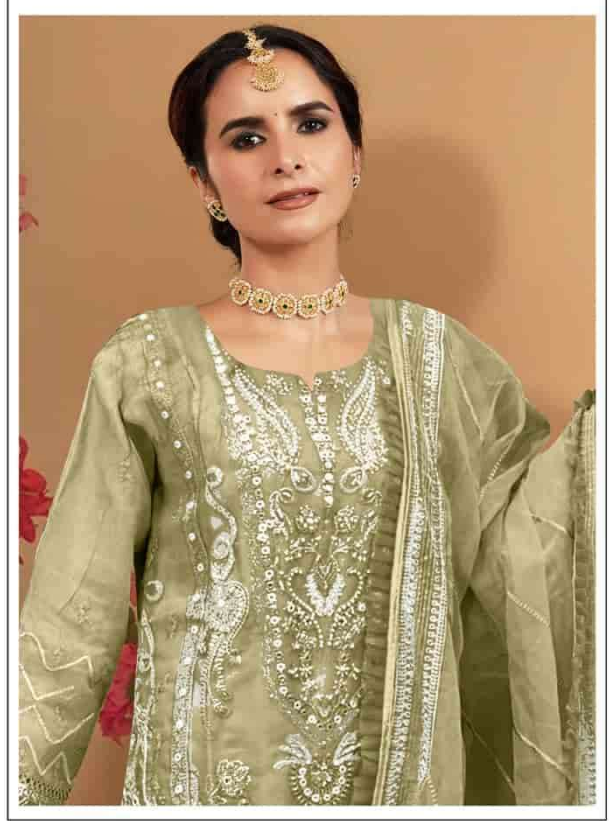
**TOP- ORGANZA WITH EMROIDERY**

**BOTTOM- SANTOON**

**DUPATTA- ORGANZA WITH EMROIDERY**

**Motifz**  
FASHION FORWARD

**D.no-295-B**



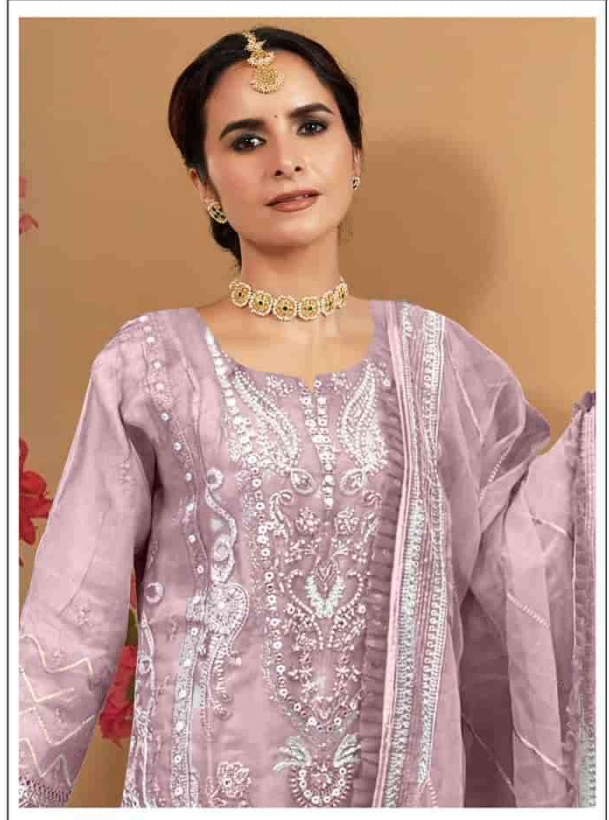
**TOP- ORGANZA WITH EMROIDERY**

**BOTTOM- SANTOON**

**DUPATTA- ORGANZA WITH EMROIDERY**

**Motifz**  
FASHION FORWARD

**D.no-295-C**



**TOP- ORGANZA WITH EMROIDERY**

**BOTTOM- SANTOON**

**DUPATTA- ORGANZA WITH EMROIDERY**