

A woman with long, dark, wavy hair is the central figure, looking slightly to her right. She is wearing a vibrant green dress with long sleeves and a patterned shawl in shades of orange, purple, and green draped over her shoulders. Her accessories include large, ornate gold earrings with turquoise stones and a matching ring. The background is a natural setting with a rocky riverbed and lush green foliage. In the top left corner, there is a gold-colored logo for 'Nang Fashion' featuring a decorative crown-like element above the brand name. At the bottom, the text 'Summer shu' is written in a white, serif font with a drop shadow.

Nang
FASHION

Summer shu



REDEFINING GLAMOUR

D.NO.
1001



D.NO. 1002 DREAMY DRAPES



T I M E L E S S M A S T E R P I E C E

D.NO.
1003





NATURAL BEAUTY

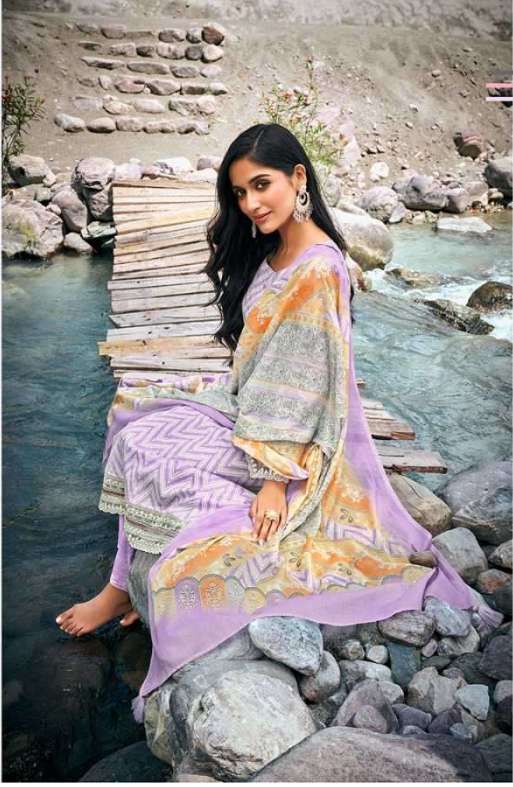
D.NO.
1005





D.NO.
1004

C E L E B R A T E M O M E N T S



TRADITIONAL SAGA

D.NO.
1008





GRACE AND GRANDEUR

D.NO.
1006





EMBRACE ELEGANCE

D.NO.
1008



Summer sky

