

Aatta
rendz



Aatta
rendz



Aatta
rendz

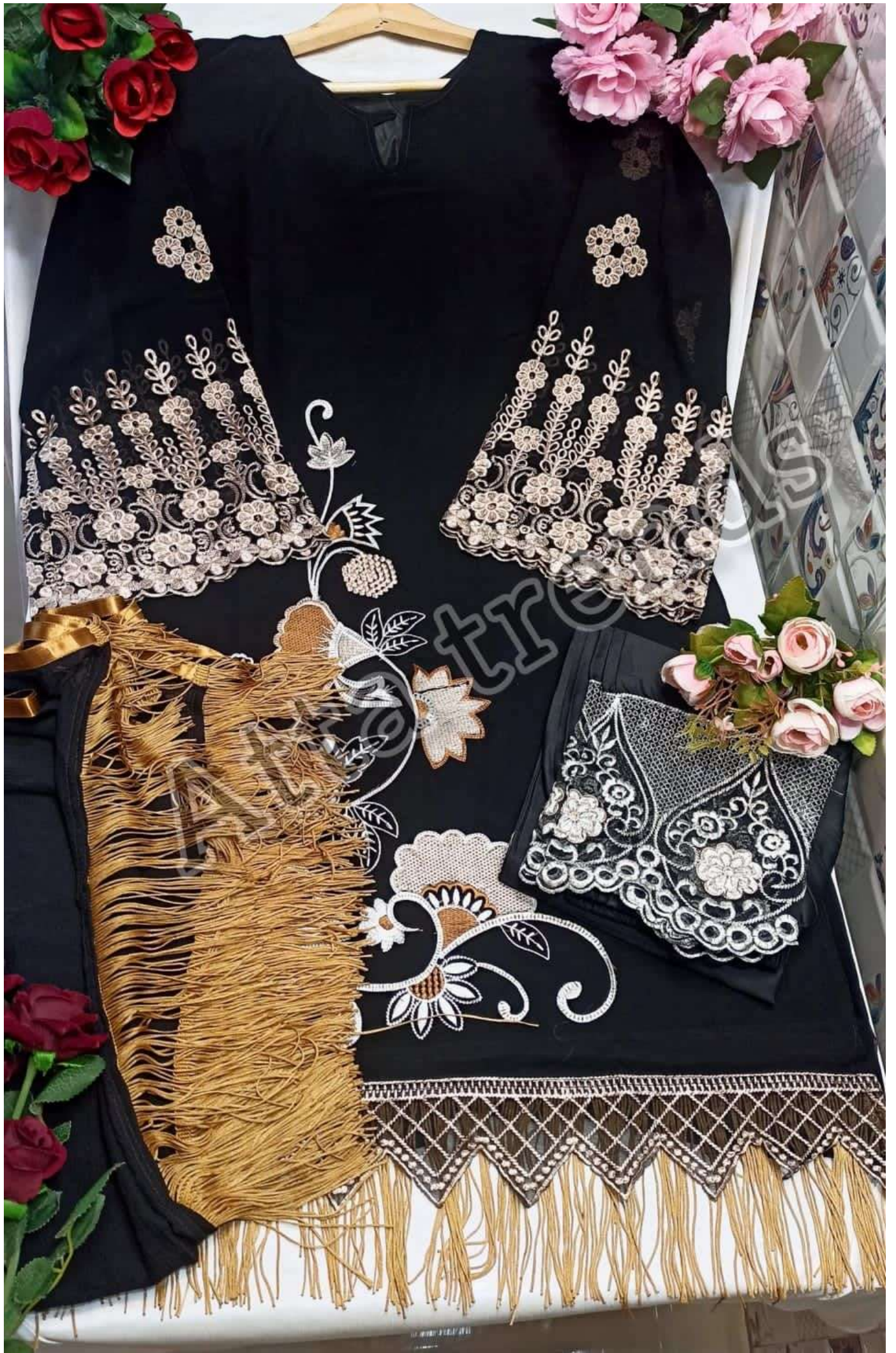


A woman with dark hair and large pearl earrings is wearing a white, long-sleeved dress with intricate lace detailing on the sleeves and floral embroidery on the front. She is standing in a room with a light blue wall, a large ornate chandelier, and a blue arched doorway. The brand name 'Aatta Trends' is overlaid on the image.

Aatta Trends

Aatta
rendz



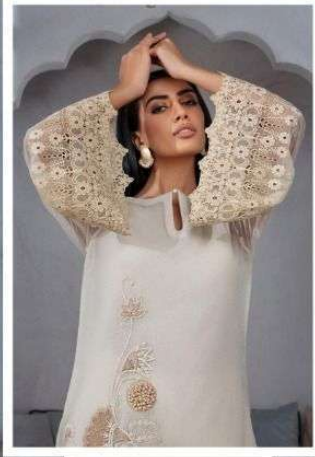






**Aatta
rends**

D.NO.2711



TOP:-FOX GEORGETTE

INNER:-DULL SANTOON

BOTTOM:-100% JAAM COTTEN

DUPATTA:-NAZNIN DUPATTA WITH 4 SIDE LACE