



Dinsaa
Suit





DS-121-C

TOP- FOX JEORGETTE
Bottom/Iner- SANTOON
Dupatta- EMBROIDERY NET
WITH FRILL



WASHING INSTRUCTIONS
 DO NOT USE HOT TYP. IF AVAILABLE USE COLD WATER OR WARM WATER
 WASH IN COLD WATER WITH MILD SOAP OR DETERGENT
 DO NOT BLEACH OR USE CHLORINE BLEACH
 DO NOT IRON OR USE STEAM IRON
 DO NOT DRY IN DIRECT SUNLIGHT
 DO NOT WASH WITH HEAVY FABRICS
 DO NOT WASH WITH HEAVY FABRICS
 DO NOT WASH WITH HEAVY FABRICS
 DO NOT WASH WITH HEAVY FABRICS

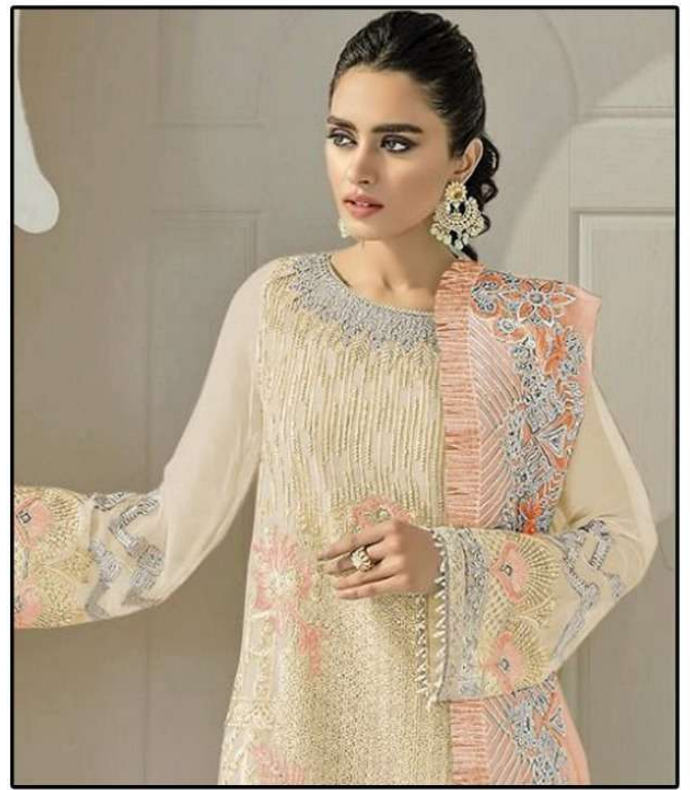


DS-121-B

TOP- FOX JEORGETTE
Bottom/Iner- SANTOON
Dupatta- EMBROIDERY NET
WITH FRILL



WASHING INSTRUCTIONS
 DO NOT USE HOT TIRE OR DRYER OR IRON OR STEAM OR BLEACH
 BEFORE DRYING OR IRONING, WOULD BE SOONER TO SHRINK IN WATER
 WASH COMPARTMENT DIRECTLY FOR 5 MINUTES
 DO NOT KEEP WET FABRIC IN TRAYS FROM IN ORDER TO AVOID OF MOLD
 WASH COLORFUL AND WHITE FABRIC SEPARATELY
 BEYOND OURS AND RESULTS TO BE RESPONSIBLE FOR ANY DAMAGE TO OBJECTS IN CONTACT
 (ITEMS TAKEN FROM OURS AND RESULTS TO BE RESPONSIBLE FOR ANY DAMAGE TO OBJECTS IN CONTACT)



DS-121-D

TOP- FOX JEORGETTE
Bottom/Iner- SANTOON
Dupatta- EMBROIDERY NET
WITH FRILL



WASHING INSTRUCTIONS
 DO NOT USE HOT TYP. IF USE OF STAIN REMOVERS OR BLEACHES
 BEFORE DRYING. DO NOT WASH IN WARMER OR COLDER WATER
 DRY CLEANING INSTRUCTIONS FOR FABRICS
 DO NOT KEEP IN CONTACT WITH OTHER FABRICS
 WASH IN COLD OR WARM WATER. GENTLY
 RING DRY OR TUMBLE DRY. DO NOT IRON. DO NOT DRY CLEAN.
 (IF THE LABELS ARE NOT INCLUDED)



DS-121-A

TOP- FOX JEORGETTE
Bottom/Iner- SANTOON
Dupatta- EMBROIDERY NET
WITH FRILL



WASHING INSTRUCTIONS
 DO NOT USE HOT TYP. IF AVAILABLE USE COLD WATER.
 BEFORE DYEING OR BLEACHING, WASH IN COLD WATER.
 WASH COMPARAT. DIRECTIONS FOR FINISHES.
 DO NOT KEEP WET FABRIC IN TRAYS FOR A LONGER PERIOD.
 WASH COLOURED AND WHITE FABRICS SEPARATELY.
 REMOVING STAIN FROM FABRIC SHOULD BE DONE BY HAND. DO NOT USE BLEACH.
 (IF YOU HAVE ANY QUESTIONS, PLEASE CONTACT US.)



DS-121-A



DS-121-B



DS-121-C



DS-121-D