





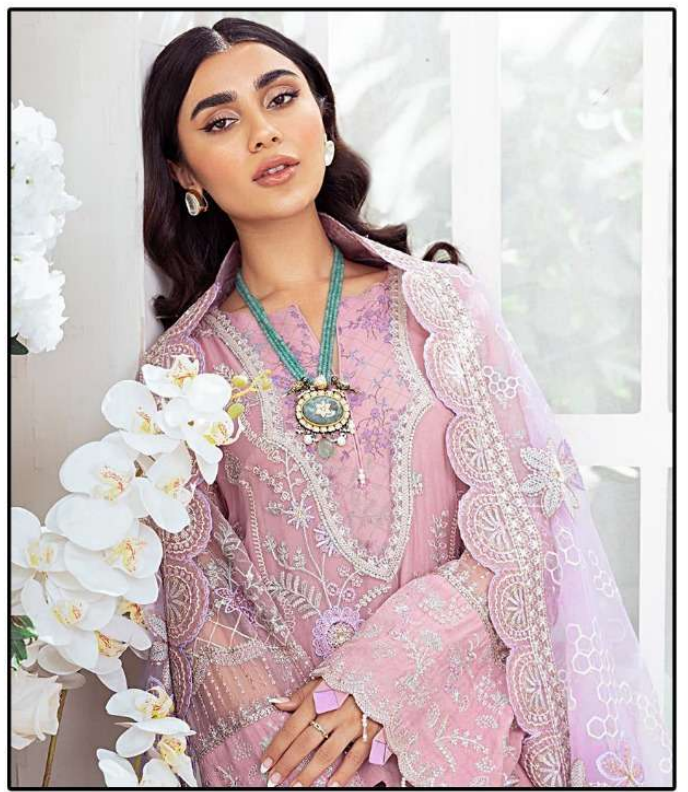


DS-108

**TOP - FOX GEORGETTE
WITH EMBROIDERY
DUPATTA - NET EMBROIDERY
BOTTOM/INER - SANTOON**



WASHING INSTRUCTIONS
DO NOT USE HOT TYP. IF AVAILABLE USE COLD WATER OR WARM WATER
DO NOT DRY CLEAN OR BLEACH. DO NOT USE SOFTENERS OR DETERGENTS
WASH COMPARTMENTS SEPARATELY FROM FABRICS
DO NOT USE IRON. IF TANGLED FROM WASHING, DO NOT WASH
WASH IN COLD OR WARM WATER. DO NOT USE DRY CLEANING
DO NOT USE DRY CLEANING. DO NOT USE DRY CLEANING. DO NOT USE DRY CLEANING
DO NOT USE DRY CLEANING. DO NOT USE DRY CLEANING. DO NOT USE DRY CLEANING



DS-110

**TOP - FOX GEORGETTE
WITH EMBROIDERY
DUPATTA - NET EMBROIDERY
BOTTOM/INER - SANTOON**



WASHING INSTRUCTIONS
DO NOT USE HOT TYP. OF WATER OR DRY CLEANING
WASH IN COLD WATER WITH LIKE COLORS IN SHADY PLACE
DO NOT USE BLEACH OR STAIN REMOVER
DO NOT IRON AT HIGH TEMPERATURE
DO NOT TUMBLE DRY
DO NOT USE DRY CLEANING
DO NOT USE STEAM IRONING
DO NOT USE DRY CLEANING



DS-109

**TOP- FOX GEORGETTE
WITH EMBROIDERY
DUPATTA - NET EMBROIDERY
BOTTOM/INER - SANTOON**



WASHING INSTRUCTIONS
DO NOT USE HOT TYP. IF AVAILABLE USE COLD WATER OR WARM WATER
DO NOT USE BLEACH OR ALKALINE SOAP OR DETERGENT IN WATER
WASH COMPARTMENT SPECIFICALLY FOR STAIN REMOVAL
DO NOT USE IRON OR STEAM IN ORDER TO AVOID SHRINKAGE
WASH IN COLD OR WARM WATER ONLY
DO NOT DRY IN DIRECT SUNLIGHT
IRON AT LOW TEMPERATURE IF NECESSARY



DS-110

**TOP- FOX GEORGETTE
WITH EMBROIDERY
DUPATTA - NET EMBROIDERY
BOTTOM/INER - SANTOON**



WASHING INSTRUCTIONS
DO NOT USE BLEACH OR OTHER CHEMICALS
DO NOT IRON OR DRY CLEAN
DO NOT WASH IN HOT WATER
DO NOT TUMBLE DRY
DO NOT USE HARSH DETERGENTS
DO NOT WASH WITH OTHER FABRICS



DS-109

**TOP- FOX GEORGETTE
WITH EMBROIDERY
DUPATTA - NET EMBROIDERY
BOTTOM/INER - SANTOON**



WASHING INSTRUCTIONS
DO NOT USE BLEACH OR OTHER CHEMICALS
DO NOT IRON OR DRY CLEAN
DO NOT WASH IN HOT WATER
DO NOT TUMBLE DRY
DO NOT USE HARSH DETERGENTS
DO NOT WASH WITH OTHER FABRICS



DS-108

**TOP- FOX GEORGETTE
WITH EMBROIDERY
DUPATTA - NET EMBROIDERY
BOTTOM/INER - SANTOON**



WASHING INSTRUCTIONS
DO NOT USE BLEACH OR OTHER CHEMICALS
DO NOT IRON OR DRY CLEAN
DO NOT WASH IN HOT WATER
DO NOT TUMBLE DRY
DO NOT USE HARSH DETERGENTS
DO NOT WASH WITH OTHER FABRICS