

Epic[®]

Rosemeen[®]
MEHRUMAH

Epic[®]

Rosemeen[®]
MEHRUMAH



Epic[®]
Rosemeen[®]
MEHRUMAH
D.NO.90035



Fepic®



WASHING INSTRUCTIONS

DO NOT USE ANY TYPE OF BLEACH OR STAIN REMOVING CHEMICALS
BEFORE CUTTING / STITCHING, FABRIC SHOULD BE SOAKED IN WATER
(ALL COMPONENTS SEPARATELY) FOR 15 MINUTES
DO NOT KEEP WET FABRIC IN TWISTED FORM IN ORDER TO AVOID COPY MARKS |
WASH COLOURED AND WHITE FABRICS SEPARATELY
IRON CLOTHES AT MODERATE TEMPERATURE | DO NOT DRY FABRIC IN DIRECT SUNLIGHT
(EXTRA LACES, HANGINGS AND ACCESSORIES ARE NOT INCLUDED)

Rosemeen®

MEHRUMAH

D.NO.90037



Fepic®



WASHING INSTRUCTIONS

DO NOT USE ANY TYPE OF BLEACH OR STAIN REMOVING CHEMICALS
BEFORE CUTTING / STITCHING, FABRIC SHOULD BE SOAKED IN WATER
(ALL COMPONENTS SEPARATELY) FOR 15 MINUTES
DO NOT KEEP WET FABRIC IN TWISTED FORM IN ORDER TO AVOID COPY MARKS |
WASH COLOURED AND WHITE FABRICS SEPARATELY
IRON CLOTHES AT MODERATE TEMPERATURE | DO NOT DRY FABRIC IN DIRECT SUNLIGHT
(EXTRA LACES, HANGINGS AND ACCESSORIES ARE NOT INCLUDED)

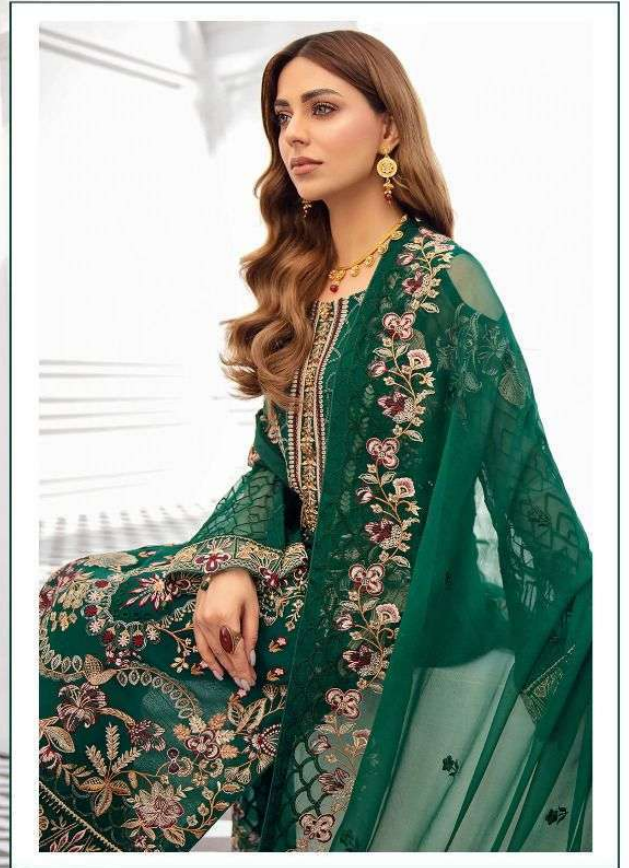
Rosemeen®

MEHRUMAH

D.NO.90035



Fepic®



WASHING INTRUCTIONS

DO NOT USE ANY TYPE OF BLEACH OR STAIN REMOVING CHEMICALS
BEFORE CUTTING / STITCHING, FABRIC SHOULD BE SOAKED IN WATER
(ALL COMPONENTS SEPARATELY) FOR 15 MINUTES
DO NOT KEEP WET FABRIC IN TWISTED FROM IN ORDER TO AVOID COPY MARKS |
WASH COLOURED AND WHITE FABRICS SEPARATELY
IRON CLOTHES AT MODERATE TEMPERATURE | DO NOT DRY FABRIC IN DIRECT SUNLIGHT
(EXTRA LACES, HANGINGS AND ACCESSORIES ARE NOT INLUDED)

Rosemeen®

MEHRUMAH

D.NO.90033





Fepic[®]



Rosemeen[®]

MEHRUMAH

D.NO.90034

Fepic®



WASHING INSTRUCTIONS

DO NOT USE ANY TYPE OF BLEACH OR STAIN REMOVING CHEMICALS
BEFORE CUTTING / STITCHING, FABRIC SHOULD BE SOAKED IN WATER
(ALL COMPONENTS SEPARATELY) FOR 15 MINUTES
DO NOT KEEP WET FABRIC IN TWISTED FORM IN ORDER TO AVOID COPY MARKS |
WASH COLOURED AND WHITE FABRICS SEPARATELY
IRON CLOTHES AT MODERATE TEMPERATURE | DO NOT DRY FABRIC IN DIRECT SUNLIGHT
(EXTRA LACES, HANGINGS AND ACCESSORIES ARE NOT INCLUDED)

Rosemeen®

MEHRUMAH

D.NO.90034



Epic
Rosemeen
MEHRUMAH
D.NO.90036





Fepic®

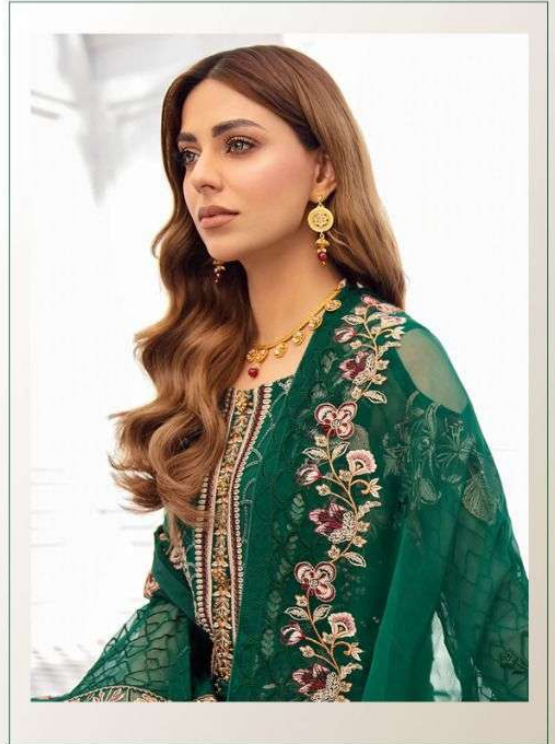
Rosemeen®

MEHRUMAH

D.NO.90038



Fepic®



Rosemeen®

MEHRUMAH

D.NO.90033

Fepic®



WASHING INTRUCTIONS

DO NOT USE ANY TYPE OF BLEACH OR STAIN REMOVING CHEMICALS
BEFORE CUTTING / STITCHING, FABRIC SHOULD BE SOAKED IN WATER
(ALL COMPONENTS SEPARATELY) FOR 15 MINUTES
DO NOT KEEP WET FABRIC IN TWISTED FROM IN ORDER TO AVOID COPY MARKS |
WASH COLOURED AND WHITE FABRICS SEPARATELY
IRON CLOTHES AT MODERATE TEMPERATURE | DO NOT DRY FABRIC IN DIRECT SUNLIGHT
(EXTRA LACES, HANGINGS AND ACCESSORIES ARE NOT INDUDED)

Rosemeen®

MEHRUMAH

D.NO.90036



Epic®



WASHING INTRUCTIONS

DO NOT USE ANY TYPE OF BLEACH OR STAIN REMOVING CHEMICALS
BEFORE CUTTING / STITCHING. FABRIC SHOULD BE SOAKED BE SOAKED IN WATER
(ALL COMPONENTS SEPARATELY) FOR 15 MINUTES
DO NOT KEEP WET FABRIC IN TWISTED FROM IN ORDER TO AVOID COPY MARKS |
WASH COLOURED AND WHITE FABRICS SEPARATELY
IRON CLOTHES AT MODERATE TEMPERATURE | DO NOT DRY FABRIC IN DIRECT SUNLIGHT
(EXTRA LACES, HANGINGS AND ACCESSORIES ARE NOT INLUDED)

Rosemeen®

MEHRUMAH

D.NO.90038



D.NO	TOP	INNER	BOTTOM	DUPATTA	PRICE
90033	GEORGETTE EMBROIDERED	SANTOON	SANTOON WITH EMB PAYAL PATCH	NAZMEEN EMBROIDERED	1289
90034	GEORGETTE EMBROIDERED	SANTOON	SANTOON WITH EMB PAYAL PATCH	NAZMEEN EMBROIDERED	1349
90035	GEORGETTE EMBROIDERED	SANTOON	SANTOON WITH EMB PAYAL PATCH	NAZMEEN EMBROIDERED	1325
90036	GEORGETTE EMBROIDERED	SANTOON	SANTOON WITH EMB PAYAL PATCH	NAZMEEN EMBROIDERED	1321
90037	GEORGETTE EMBROIDERED	SANTOON	SANTOON WITH EMB PAYAL PATCH	NET EMBROIDERED	1451
90038	GEORGETTE EMBROIDERED	SANTOON	SANTOON WITH EMB PAYAL PATCH	NET EMBROIDERED FRILL DUPATTA	1359
AVG PRICE 1349					


 _Fepic
 :Fb.com/Fepic11
MEHRUMAH



D.NO.90033

D.NO.90034

D.NO.90035

D.NO.90036

D.NO.90037

D.NO.90038

Fepic® **Rosemeen**®
MEHRUMAH

 :_Fepic
 :Fb.com/Fepic11