

Epic[®]



Rosemeen[®]
Ezlya

Epic[®]



Rosemeen[®]
Ezlya

Fepic®



WASHING INTRUCTIONS

DO NOT USE ANY TYPE OF BLEACH OR STAIN REMOVING CHEMICALS
BEFORE CUTTING / STITCHING, FABRIC SHOULD BE SOAKED BE SOAKED IN WATER
(ALL COMPONENTS SEPARATELY) FOR 15 MINUTES
DO NOT KEEP WET FABRIC IN TWISTED FROM IN ORDER TO AVOID COPY MARKS |
WASH COLOURED AND WHITE FABRICS SEPARATELY
IRON CLOTHES AT MODERATE TEMPERATURE | DO NOT DRY FABRIC IN DIRECT SUNLIGHT
(EXTRA LACES, HANGINGS AND ACCESSORIES ARE NOT INDUDED)

Rosemeen®

Ezlyn

D.NO.90031



Fepic®



WASHING INSTRUCTIONS

DO NOT USE ANY TYPE OF BLEACH OR STAIN REMOVING CHEMICALS
BEFORE CUTTING / STITCHING, FABRIC SHOULD BE SOAKED IN WATER
(ALL COMPONENTS SEPARATELY) FOR 15 MINUTES
DO NOT KEEP WET FABRIC IN TWISTED FORM IN ORDER TO AVOID COPY MARKS |
WASH COLOURED AND WHITE FABRICS SEPARATELY
IRON CLOTHES AT MODERATE TEMPERATURE | DO NOT DRY FABRIC IN DIRECT SUNLIGHT
(EXTRA LACES, HANGINGS AND ACCESSORIES ARE NOT INCLUDED)

Rosemeen®

Ezlyn

D.NO.90028



Fepic®



WASHING INTRUCTIONS

DO NOT USE ANY TYPE OF BLEACH OR STAIN REMOVING CHEMICALS
BEFORE CUTTING / STITCHING, FABRIC SHOULD BE SOAKED BE SOAKED IN WATER
(ALL COMPONENTS SEPARATELY) FOR 15 MINUTES

DO NOT KEEP WET FABRIC IN TWISTED FROM IN ORDER TO AVOID COPY MARKS |
WASH COLOURED AND WHITE FABRICS SEPARATELY

IRON CLOTHES AT MODERATE TEMPERATURE | DO NOT DRY FABRIC IN DIRECT SUNLIGHT
(EXTRA LACES, HANGINGS AND ACCESSORIES ARE NOT INDUDED)

Rosemeen®

Ezlyn

D.NO.90027



Fepic®



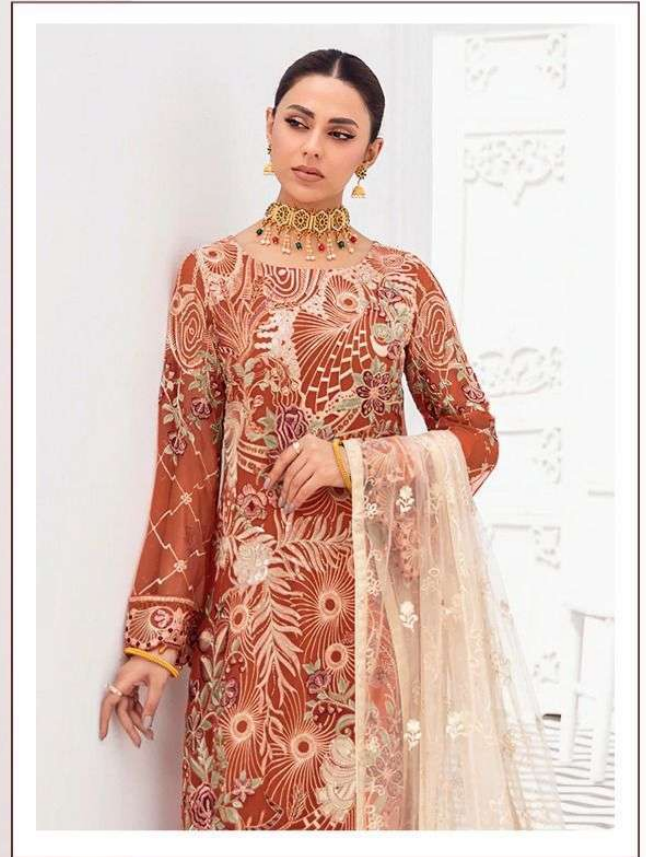
WASHING INSTRUCTIONS

DO NOT USE ANY TYPE OF BLEACH OR STAIN REMOVING CHEMICALS
BEFORE CUTTING / STITCHING, FABRIC SHOULD BE SOAKED IN WATER
(ALL COMPONENTS SEPARATELY) FOR 15 MINUTES
DO NOT KEEP WET FABRIC IN TWISTED FORM IN ORDER TO AVOID COPY MARKS |
WASH COLOURED AND WHITE FABRICS SEPARATELY
IRON CLOTHES AT MODERATE TEMPERATURE | DO NOT DRY FABRIC IN DIRECT SUNLIGHT
(EXTRA LACES, HANGINGS AND ACCESSORIES ARE NOT INCLUDED)

Rosemeen®
Ezlyn
D.NO.90029



Fepic®



WASHING INSTRUCTIONS

DO NOT USE ANY TYPE OF BLEACH OR STAIN REMOVING CHEMICALS
BEFORE CUTTING / STITCHING, FABRIC SHOULD BE SOAKED IN WATER
(ALL COMPONENTS SEPARATELY) FOR 15 MINUTES
DO NOT KEEP WET FABRIC IN TWISTED FORM IN ORDER TO AVOID COPY MARKS |
WASH COLOURED AND WHITE FABRICS SEPARATELY
IRON CLOTHES AT MODERATE TEMPERATURE | DO NOT DRY FABRIC IN DIRECT SUNLIGHT
(EXTRA LACES, HANGINGS AND ACCESSORIES ARE NOT INLUDED)

Rosemeen®
Ezlyn
D.NO.90030



Fepic®



WASHING INSTRUCTIONS

DO NOT USE ANY TYPE OF BLEACH OR STAIN REMOVING CHEMICALS
BEFORE CUTTING / STITCHING, FABRIC SHOULD BE SOAKED IN WATER
(ALL COMPONENTS SEPARATELY) FOR 15 MINUTES
DO NOT KEEP WET FABRIC IN TWISTED FORM IN ORDER TO AVOID COPY MARKS |
WASH COLOURED AND WHITE FABRICS SEPARATELY
IRON CLOTHES AT MODERATE TEMPERATURE | DO NOT DRY FABRIC IN DIRECT SUNLIGHT
(EXTRA LACES, HANGINGS AND ACCESSORIES ARE NOT INCLUDED)

Rosemeen®

Ezlyn

D.NO.90032



Fepic[®]
D.NO.90029



Rosemeen[®]
Ezlyn





Fepic
D.NO.90028



Rosemeen
Ezlyn



Fepic[®]

D.NO.90031

Rosemeen[®]

Ezlyn



Fepic[®]

D.NO.90032

Rosemeen[®]

Ezlyn



Fepic

D.NO.90027



Rosemeen
Ezlyn



Eepic[®]

D.NO.90030

Rosemeen[®]

Ezlyn



D.NO	TOP	INNER	BOTTOM	DUPATTA	PRICE
90027	GEORGETTE EMBROIDERED	SANTOON	SANTOON WITH EMB PAYAL PATCH	NAZMEEN EMBROIDERED	1345
90028	GEORGETTE EMBROIDERED	SANTOON	SANTOON WITH EMB PAYAL PATCH	HEAVY NET EMBROIDERED FRILL DUPATTA	1383
90029	GEORGETTE EMBROIDERED	SANTOON	SANTOON WITH EMB PAYAL PATCH	NAZMEEN EMBROIDERED	1378
90030	GEORGETTE EMBROIDERED	SANTOON	SANTOON WITH EMB PAYAL PATCH	HEAVY NET EMBROIDERED	1422
90031	GEORGETTE EMBROIDERED	SANTOON	SANTOON WITH EMB PAYAL PATCH	NAZMEEN EMBROIDERED FRILL DUPATTA	1455
90032	GEORGETTE EMBROIDERED	SANTOON	SANTOON WITH EMB PAYAL PATCH	NAZMEEN EMBROIDERED	1409
					AVG PRICE 1399





[_Fepic](https://www.instagram.com/_Fepic)

[:Fb.com/Fepic11](https://www.facebook.com/Fepic11)



D.NO.90027



D.NO.90028



D.NO.90029



D.NO.90030




D.NO.90031



D.NO.90032

Fepic **Rosemeen**
Ezlyn

 :Fepic

 :Fb.com/Fepic11