

ENGAGEMENT

READY TO WEAR


ALIZEH
BOLD & BEAUTIFUL



ENGAGEMENT

READY TO WEAR

ALIZEH
BOLD & BEAUTIFUL



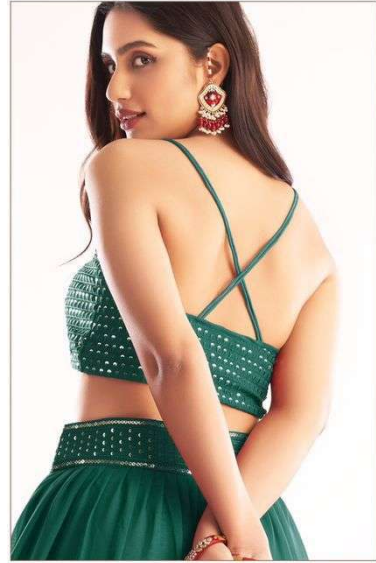


1060 A





ALIZEH
LUGER & PARTNERS



1060 A

ALIZEH



1060 B





ALIZEH

1060 B



ALIZEH
LAKHMEER



1060 C







1060 D



ALIZEH



ALIZEE
1060 D





ALIZEH



1060 E



1060 E

ALIZEH
BOLD & BEAUTIFUL



1060 A



1060 B



1060 C



1060 D



1060 E



ALIZEH
BOLD & BEAUTIFUL



ALIZEH READYMADE LEHENGA SIZE GUIDE

SIZE GUIDE

| SIZE | BUST | WAIST | HIPS |
|------|------|-------|------|
| L | 40" | 36" | 44" |
| XL | 42" | 38" | 46" |

*2 INCHES MARGIN PROVIDED IN BLOUSE

*ALL SIZES IN INCHES

DESCRIPTION:

FABRIC DESCRIPTION:

LEHENGA & CHOLI FABRIC- PURE GEORGETTE WITH DULL SANTOON INNER

DUPATTA FABRIC - NET

SIZE DESCRIPTION:

CHOLI LENGTH- 16 INCHES

CHOLI WITH PAD- YES

ZIPPER- SIDE ZIPPER PROVIDED

SLEEVES- YES, FABRIC PROVIDED 0.60 MTRS

LEHENGA LENGTH- 44 INCHES

LEHENGA FLAIR- 20 MTRS WITH GATHERING PATTERN

LEHENGA WITH CANCAN & CANVAS- YES

DUPATTA LENGTH-2.30 MTRS

DUPATTA WIDTH- 1 MTRS