

A woman is shown from the chest up, wearing a black outfit with intricate gold embroidery. She is also wearing a black dupatta with gold borders and a large, ornate gold necklace and earrings. Her hair is styled in a bun with a gold headpiece. The background is blurred, suggesting an outdoor setting.

ZARQASH[®]
A BRAND BY *Kutrraw*

CRIMSON

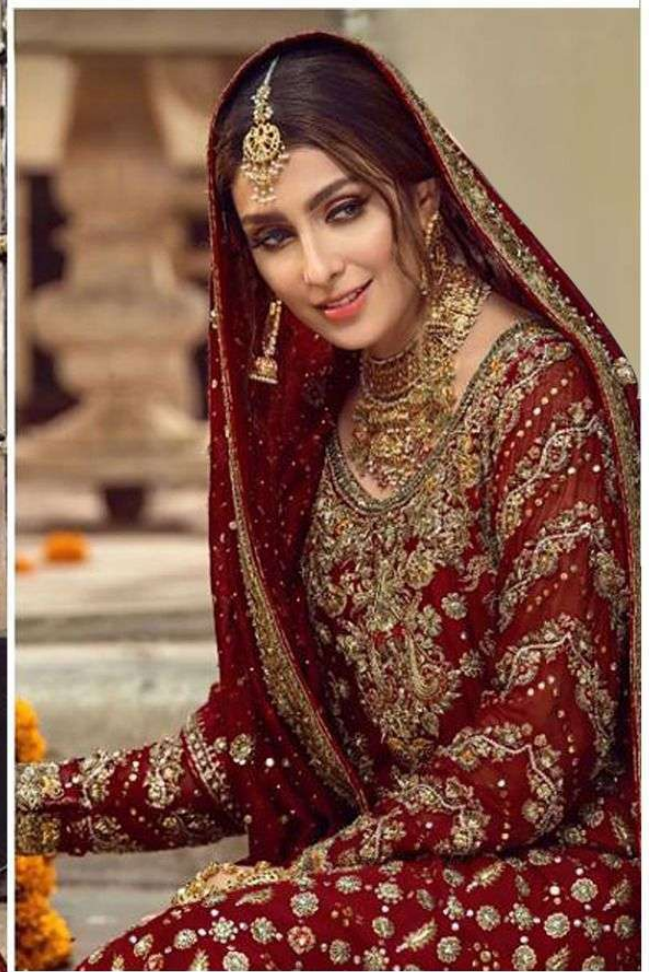


ZARQASH[®]
A BRAND BY *Kutrraw*

CRIMSON

ZARQASH®
A BRAND BY KUTTY®

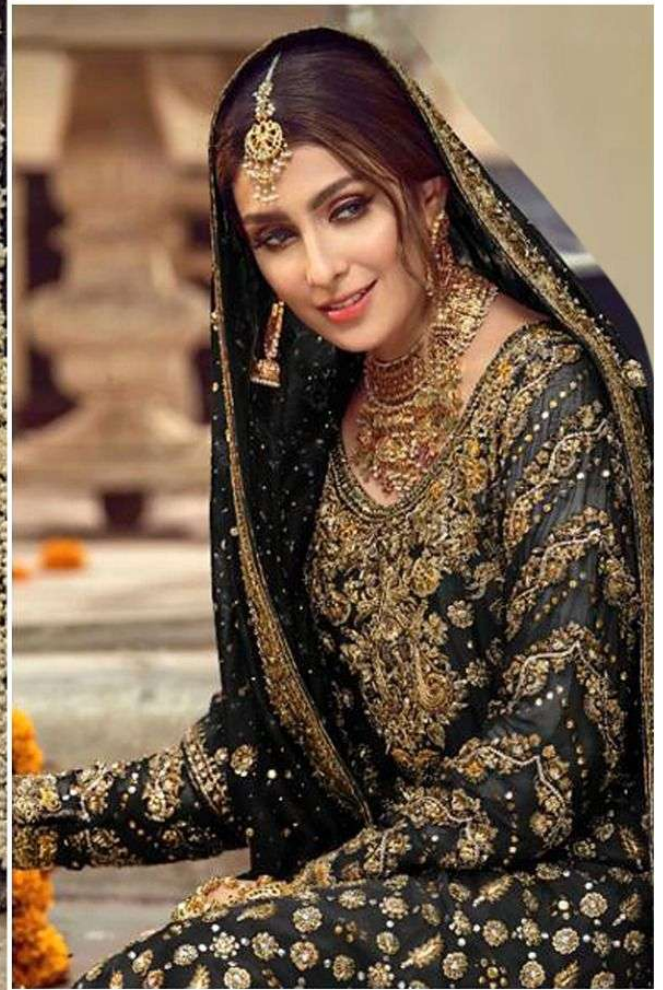
Z-2069 A



TOP - FOX GEORGEATE WITH HEAVY EMBROIDERED
WITH DAIMOND WORK
INNER - HEAVY SANTOON SILK
BOTTOM- JAQUARD WITH SEANTUN EMB LACE
DUPATTA - NAZNEEN WITH HEAVY EMBROIDERED

ZARQASH®
A BRAND BY KUTUMBA

Z-2069 B



TOP - FOX GEORGEATE WITH HEAVY EMBROIDERED
WITH DAIMOND WORK
INNER - HEAVY SANTOON SILK
BOTTOM- JAQUARD WITH SEANTUN EMB LACE
DUPATTA - NAZNEEN WITH HEAVY EMBROIDERED

ZARQASH[®]
A BRAND BY Kozmic

CRIMSON



Z-2069 A



Z-2069 B

TOP - FOX GEORGEATE WITH HEAVY EMBROIDERED
WITH DAIMOND WORK
INNER - HEAVY SANTOON SILK
BOTTOM- JAQUARD WITH SEANTUN EMB LACE
DUPATTA - NAZNEEN WITH HEAVY EMBROIDERED