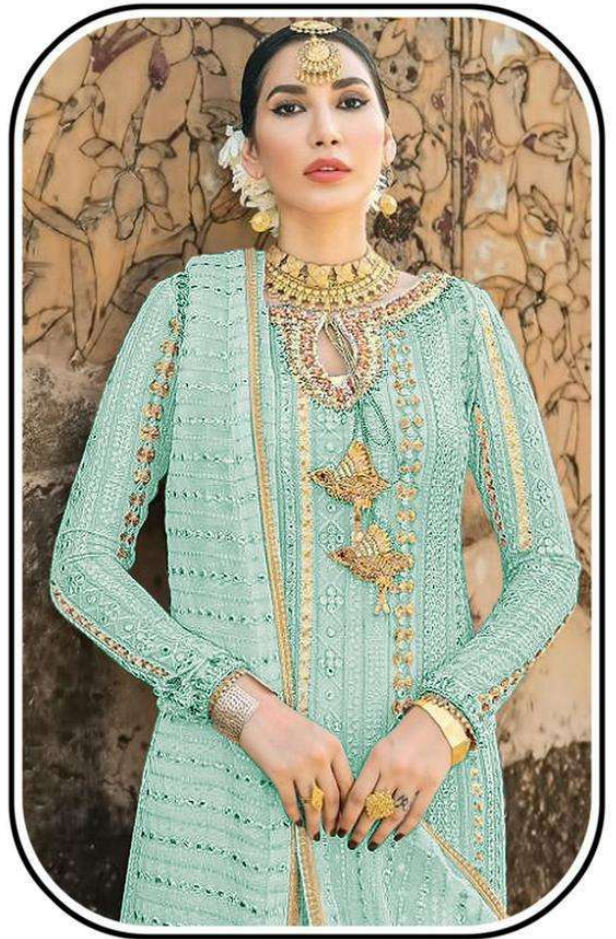
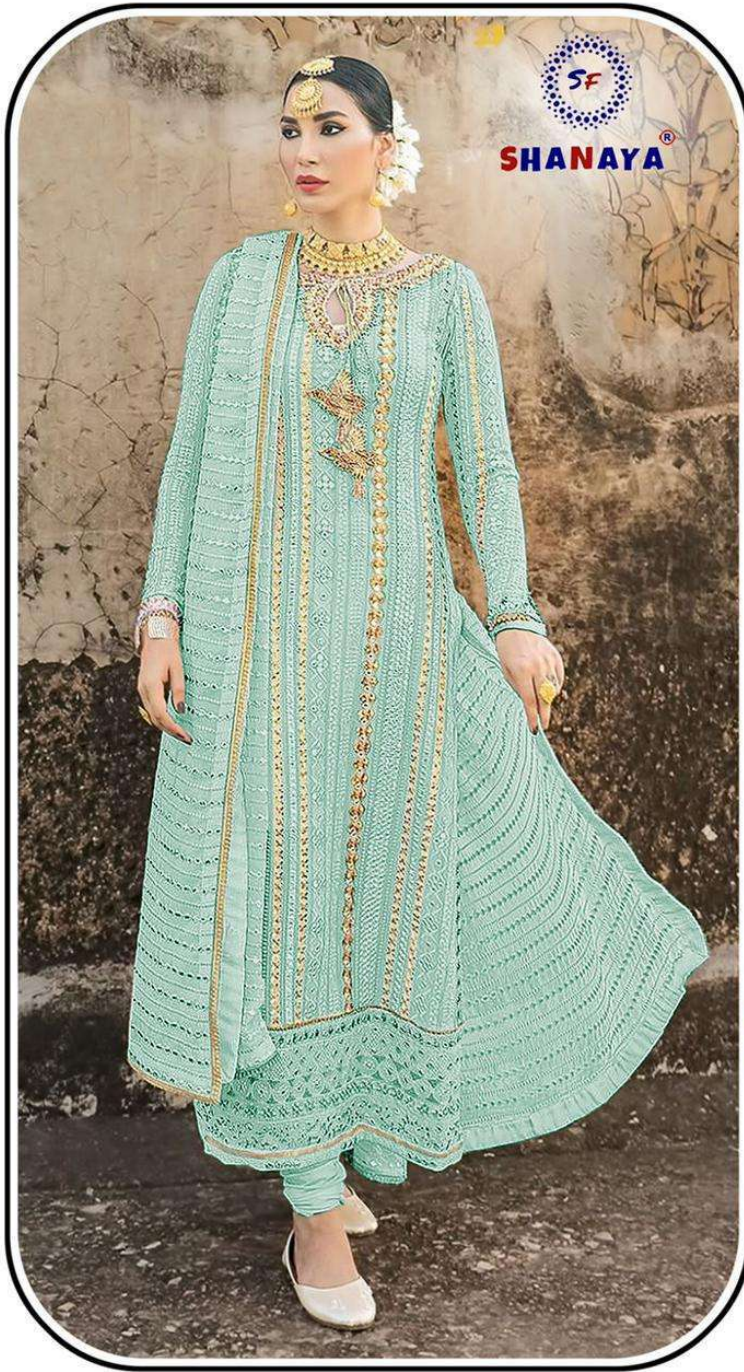


S-92 A *Rose*
AYNOOR

WASHING INSRUCTIONS

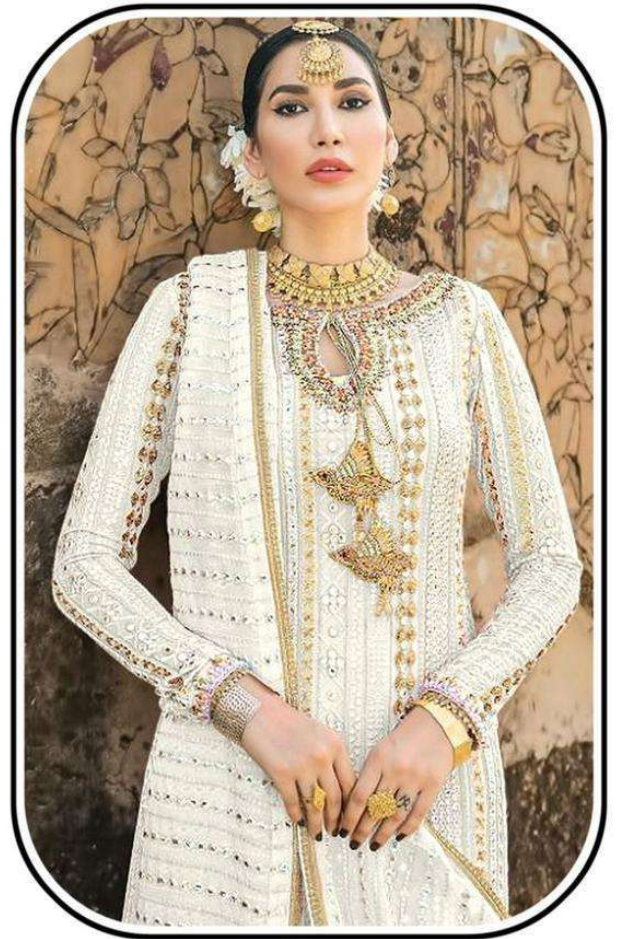
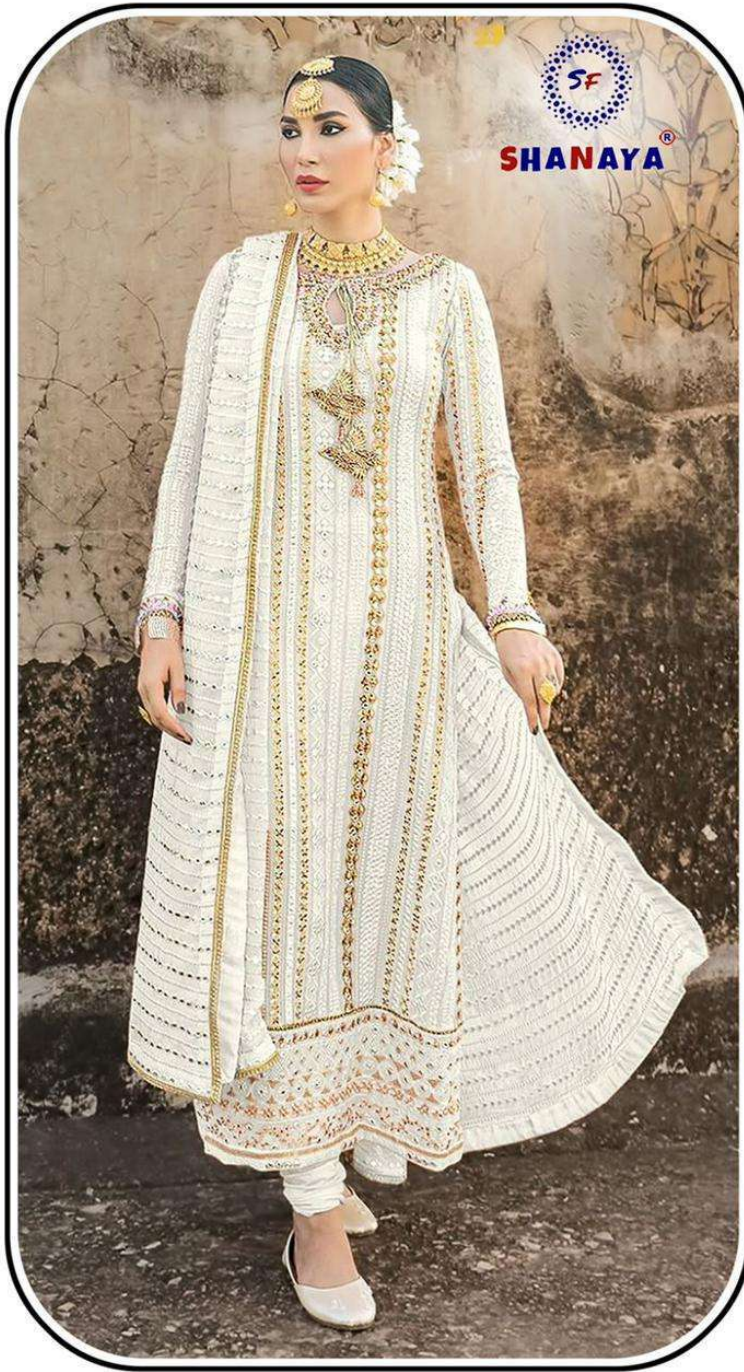
DO NOT USE ANY TYPE OF BLEACH OR STAIN REMOVING CHEMICALS
BEFORE CUTTING / STITCHING , FABRIC SHOULD BE SOAKED BE SOAKED IN WATER
(ALL COMPONENTS SEPARATELY) FOR 15 MINUTES
DO NOT KEEP WET FABRIC IN TWISTED FROM IN ORDER TO AVOID COPY MARKS |
WASH COLOURED AND WHITE FABRICS SEPARATELY
IRON CLOTHES AT MODERATE TEMPERATURE | DO NOT DRY FABRIC IN DIRECT SUNLIGHT
(EXTRA LACES, HANGINGS AND ACCESSORIES ARE NOT INDUDED)



S-92 B *Rose*
AYNOOR

WASHING INSTRUCTIONS

DO NOT USE ANY TYPE OF BLEACH OR STAIN REMOVING CHEMICALS
BEFORE CUTTING / STITCHING , FABRIC SHOULD BE SOAKED IN WATER
(ALL COMPONENTS SEPARATELY) FOR 15 MINUTES
DO NOT KEEP WET FABRIC IN TWISTED FROM IN ORDER TO AVOID COPY MARKS |
WASH COLOURED AND WHITE FABRICS SEPARATELY
IRON CLOTHES AT MODERATE TEMPERATURE | DO NOT DRY FABRIC IN DIRECT SUNLIGHT
(EXTRA LACES, HANGINGS AND ACCESSORIES ARE NOT INDUDED)



S-92 C *Rose*
AYNOOR

WASHING INSTRUCTIONS

DO NOT USE ANY TYPE OF BLEACH OR STAIN REMOVING CHEMICALS
BEFORE CUTTING / STITCHING , FABRIC SHOULD BE SOAKED IN WATER
(ALL COMPONENTS SEPARATELY) FOR 15 MINUTES
DO NOT KEEP WET FABRIC IN TWISTED FROM IN ORDER TO AVOID COPY MARKS |
WASH COLOURED AND WHITE FABRICS SEPARATELY
IRON CLOTHES AT MODERATE TEMPERATURE | DO NOT DRY FABRIC IN DIRECT SUNLIGHT
(EXTRA LACES, HANGINGS AND ACCESSORIES ARE NOT INDUDED)



WASH CARE
Wash in cold water with mild detergent
Do not use bleach or strong chemicals
Do not iron directly on the fabric
Do not dry in direct sunlight

SHANAYA
Exclusive Fashion Designer Brand

Style



S-92 A Rose ANWOOD

SHANAYA
WASH CARE
Wash in cold water with mild detergent
Do not use bleach or strong chemicals
Do not iron directly on the fabric
Do not dry in direct sunlight



IRON CARE
Wash in cold water with like colors.
Do not use chlorine bleach.
Do not use iron.
Do not dry clean.
Do not use fabric softener.
Do not use dryer.
Do not use steam iron.
Do not use hot water.
Do not use hot water.
Do not use hot water.
Do not use hot water.

SHANAYA
Exclusive Premium Cotton Material

Rose



S-92 B *Rose*
AYRHOOR

WEARING INSTRUCTIONS
DO NOT USE HOT WATER FOR WASHING. DO NOT USE BLEACH. DO NOT USE IRON. DO NOT USE DRY CLEANING. DO NOT USE FABRIC SOFTENER. DO NOT USE HOT WATER. DO NOT USE HOT WATER. DO NOT USE HOT WATER. DO NOT USE HOT WATER.



S-92 C *Rose* ATWOOD

WEARING INSTRUCTIONS
 DO NOT USE THE IRON ON GARMENT (SPECIAL CARE)
 DO NOT WASH IN WASHING MACHINE
 DO NOT BLEACH
 DO NOT DRY CLEAN
 DO NOT USE HOT IRON
 DO NOT USE DRY CLEANING
 DO NOT USE STEAM IRONING
 DO NOT USE PRESSURE IRONING
 DO NOT USE PRESSURE CLEANING
 DO NOT USE PRESSURE WASHING
 DO NOT USE PRESSURE CLEANING

WASH CARE
 • DO NOT WASH IN WASHING MACHINE
 • DO NOT BLEACH
 • DO NOT DRY CLEAN
 • DO NOT USE HOT IRON
 • DO NOT USE STEAM IRONING
 • DO NOT USE PRESSURE IRONING
 • DO NOT USE PRESSURE CLEANING
 • DO NOT USE PRESSURE WASHING
 • DO NOT USE PRESSURE CLEANING

SHANAYA
 Exclusive Publisher Dress Material
Rose



S-92 A



S-92 B



S-92 C

